

# PYRA



poole yacht racing association

# 2021



# RED BOOK

handbook and programme



## The Complete Mast, Rigging & Installation Service.

- ⌘ Composite rigging – aramid fibre cables with biconic cone Light weight terminations
- ⌘ Complete standing rod rigging packages with heading capabilities up to -220 (30.25mm)
- ⌘ Complete standing wire rigging packages with capabilities up to 32mm 1x19 or Dyform
- ⌘ All modern & classic ropes, In Dyneema, Vectran, polyester and Hemp.
- ⌘ Hydraulic system packages including in house service & Installation
- ⌘ In house manufacturing of aluminium masts including bespoke & fabricated fittings
- ⌘ Suppliers of carbon masts
- ⌘ Manufacturers & suppliers of spinnaker poles
- ⌘ Manufacturers & suppliers of booms
- ⌘ Manufacturers & suppliers of hydraulic, gas and spring vang
- ⌘ Suppliers of head foil & furling gears systems
- ⌘ Suppliers of complete deck hardware packages
- ⌘ Complete service available for unstepping, re stepping, dock & sail tuning
- ⌘ Complete mast & rigging visual inspections





LYMINGTON  
HARBOUR

## ONLY A STEP AWAY...

Beautiful Georgian Town  
New Forest Activities  
Fantastic Dining Experiences  
Things To See & Do

**NEW**  
walk ashore  
berths at  
Town Quay with  
power, water &  
Wi-Fi

### CHARMING HARBOUR WITH FIRST CLASS MOORING FACILITIES

*"Lymington River and its approaches offer a safe haven for yachtsmen. We have a beautiful river and harbour area, and we pride ourselves on offering a friendly welcome to all."*

**Ryan Willegers, Harbour Master**

**Find out more:**

LET'S GET SOCIAL



[WWW.LYMINGTONHARBOUR.CO.UK](http://WWW.LYMINGTONHARBOUR.CO.UK)

[INFO@LYMINGTONHARBOUR.CO.UK](mailto:INFO@LYMINGTONHARBOUR.CO.UK)

01590 672014

# CONTENTS

## PART ONE: OFFICERS & CONSTITUTION

1.0 - Officers 2021 .....	2.2.The Committee.....	7
Captains of Classes .....	2.3. General Meetings.....	8
Club Representatives.....	2.4. Membership .....	8
2.0 - Constitution .....	2.5. Constitution (Rules) .....	9
2.1. Objects.....		

## PART TWO: SAILING INSTRUCTIONS & NOTICE OF RACE

1.0 - Rules.....	4.1. Radio Communications .....	13
1.2. Racing at Night.....	4.2. Alterations to Sailing Instructions.....	13
1.3. Advertising .....	4.3. Postponement and Abandonment.....	13
1.4 Regattas.....	5.0 - Race Programme 2021 .....	14
2.0 - Conditions of Entry .....	5.1 Schedule of Races .....	14
2.1 General.....	5.2 Races for Points Series .....	32
2.2. Eligibility .....	6.0 - Marks .....	32
2.3. Race Entries.....	7.0 - Starts.....	33
2.4. Identification of Classes .....	Alternative Starts .....	34
2.5 Division of Classes .....	8.0 - Additional Rules Whilst Racing .....	39
2.6. Rating/Handicapping.....	9.0 - Finishing .....	40
2.7. Identification of Boats .....	10.0. Protests .....	43
3.0 - Safety.....	11.0 Scoring System .....	43
3.1. Race Categories.....	PYRA Challenge Trophies.....	44
3.2. PYRA Special Requirements.....	How to ensure that you get a result recorded.....	45
3.3. Stability .....	SelfTiming - BST/GPS .....	45
3.4. Basic Safety Requirements .....	Acting as start boat.....	46
4.0 - Communications with Competitors.....	Social Arrangements .....	47



## PHOTO COMP

When away on PYRA trips take your camera and record the event

A prize will be awarded to the contributor of the best photo

# The 2021 Programme - at a glance

Date	Race No.	Event	Start*	Time Limit	Series	Page
<b>April</b>						
Sat 17th	1	Poole – Yarmouth	10.00	18.00		16
Sun. 18th	2	Yarmouth – Poole	13.00	22.00		16
<b>May</b>						
Sat. 1st		Poole Bay Regatta/Coaching				16
Sun. 2nd	4/5	Poole Bay Regatta				16
Mon. 3rd	6	Poole Bay Regatta - Navigators' Challenge				16
Sat. 15th	7/8/9	Two Handed	10.00	18.00	2H	18
Sun. 16th	10	Pursuit Race	10.30			18
Fri. 28th	11	Poole – Cherbourg	19.00	18.00**	Ch	18
Sun. 30th	12	Cherbourg – Portland	08.00	23.00	Ch	18
Mon. 31st	13	Portland – Poole	09.30	18.00	Ch	18
<b>June</b>						
Sat. 12th	14	Poole – Weymouth	11.00	18.00	Pass A	20
Sun. 13th	15	Weymouth – Poole	08.00	19.00	Pass A	20
Sat. 19th	16/17	Bay Races	10.30	18.00	PtoP	20
Sun. 20th	18/19	Bay Races	10.30	18.00	PtoP	20
Sat. 19th – Sun. 27th		On Tour to Dartmouth	06.00			20
<b>July</b>						
Fri. 2nd	20	Poole – Cowes	10.00	19.00	Pass A	22
Sat. 3rd		Round The Island				
Sun. 4th	21	Cowes – Poole	09.00	18.00	Pass A	22
Fri. 16th	22	Poole – Alderney	07.00	23.59	Ch	22
Sun. 18th	23	Alderney – Poole	06.00	22.00	Ch	22
Sat. 24th	24	Poole – Portland	10.30	18.00	Pass A	24
Sun. 25th	25	Portland – Poole	08.00	18.00	Pass A	24
<b>August</b>						
Sat. 7th	26	Poole – Lymington	13.00	20.00	Pass B	24
Sun. 8th	27	Lymington – Poole	11.00	19.00	Pass B	24
Fri. 20th	28	Poole – St Vaast	07.30	07.00**	Ch	26
Sun. 22nd	29	St Vaast – Poole	08.00	23.59	Ch	26
Fri. 27th	30	Poole – Lymington	10.00	18.00	Pass B26	
Sat/Sun 28th/29th		VPRS Nationals				26
Mon. 30th	31	Lymington – Poole	08.00	18.00	Pass B	28
<b>September</b>						
Sat. 11th	32	Poole – Yarmouth Dash	09.00	14.00	PtoP	28
Sat. 11th	33	Yarmouth – Poole Dash	15.00	20.00	PtoP	28
Sun. 12th	34	Bay Race	13.00	18.00	PtoP	28
Sat. 25th	35	Poole – Weymouth	13.00	20.00	Pass B	30
Sun. 26th	36	Weymouth – Poole	09.00	18.00	Pass B	30
<b>October</b>						
Sat. 9th	37	Poole – Bucklers Hard	09.00	17.00	PassB	30
Sun. 10th	38	Bucklers Hard – Poole	12.30	19.00	PassB	30

## \*Starts:

Unless otherwise stated, first start is Class 5 followed five minutes later by Class 4 and 3. Followed five minutes later by Class 2 and 1.

## \*\*The following day

**PYRA Website:**  
**www.pyra.org.uk**  
**Why not make it your home page?**

## **PART ONE: OFFICERS AND CONSTITUTION**

### **1.0 - Officers 2021**

#### **Association Captain**

Rob Gibson

#### **Captains of Classes**

Class 1 Captain	Philip Nicholas
Class 1 Vice Captain	Ivor Graham
Class 2 Captain	Brendon Pell
Class 2 Vice Captain	Simon King
Class 3 Captain	Martin Murphy
Class 4 Captain	TBA
Class 5 Captain	Di Broadbent

#### **Hon Treasurer**

Mark Carey

#### **Hon Record Secretary**

Matt Hitt

#### **Hon Social Secretary**

Jane Phillipps

#### **Hon Web Master**

Mike Fox

#### **Club Representatives**

Parkstone YC	Peter Biggs
Poole YC	Martin Murphy
Royal Motor YC	Keith Lovett

#### **PR/Promotion**

Bob Dyer

#### **Rating Officer**

Ruth Kelly

#### **Hon Secretary**

8 Dudsbury Avenue,  
Ferndown,  
Dorset BH22 8DU

Ron Gentle  
01202 871038

[secretary@pyra.org.uk](mailto:secretary@pyra.org.uk)

### **Be Aware**

**If circumstances or conditions dictate your Class Captain may make changes to a race on the day. This could be a change in timing, a change of destination, or even of finish line. You should listen on M2, don't just follow the boat in front!**

## 2.0 Constitution

### 2.1. Objects

Poole Yacht Racing Association (The Association or PYRA) exists to promote, encourage, organise and co-ordinate racing for bona fide sailing yachts, herein after referred to as boats, in association with the member Yacht Clubs based on Poole Harbour, which support it. Currently these are the Parkstone, Poole and Royal Motor Yacht Clubs, plus any other club approved by the General Committee.

### 2.2. The Committee

- A)** The affairs of the Association shall be managed by a General Committee, consisting of:-  
 The Captain of the Association  
 The Vice Captain of the Association  
 The Hon. Secretary  
 The Hon. Treasurer  
 The Hon. Records Secretary  
 The Rating Officer  
 The Hon. Social Secretary  
 The Hon. Web Master  
 The PR/Promotions Officer  
 The Captains and Vice Captains of each of the Racing Classes.  
 A representative appointed by each of the supporting clubs.
- B)** The Club Representatives, one from each of the supporting clubs shall be appointed by their respective General Committees.
- C)** The Captain and Vice Captain of each of the racing classes shall be elected at the Annual General Meeting of their respective classes and their election submitted for confirmation at the Annual General Meeting of the Association. They shall not be eligible for re-election to that office in the one year immediately following four consecutive years therein.
- D)** All other officers shall be elected at the Annual General Meeting of the Association.
- E)** The Captain of the Association shall not be eligible for re-election to that office in the one year immediately following three consecutive years therein.
- F)** Nominations for any of these Offices may be submitted by any Full Member of the Association in writing to the Secretary at least 21 days prior to the Annual General Meeting. Each nomination shall contain the names of the proposer and the seconder and shall confirm that the Member nominated has agreed to accept nomination.

When no valid written nomination has been received for any Office, the Chairman may accept a nomination at the Annual General Meeting. Should more than one nomination be received for any Office then the Chairman shall conduct a written ballot. If any Office remains unfilled, the Committee may at their discretion, co-opt a member to fill that position.

### 2.3. General Meetings

- A)** The Annual General Meeting of the Members of the Association shall be held each year at such time and place as the Committee shall appoint.
- B)** An Extraordinary General Meeting may be convened at any time deemed necessary or desirable by the Committee or on receiving a Requisition, signed by no less than ten Members who are entitled to vote at General Meetings, such requisition shall state the object of the Proposed Meeting.
- C)** Notice in writing of any Annual or Extraordinary General Meeting setting out the Agenda of that meeting shall be sent to all members of the Association at least fourteen days before the date set for the Meeting. The minutes of these meetings shall be made available to members.
- D)** At any General Meeting the Chair shall be taken by the Captain of the Association, or failing this by some other person appointed as Chairman by the Committee.
- E)** All Committee Members and every Full Member of the Association shall have one vote and, except as provided in Clause 2.5, resolutions will be decided by a simple majority of the votes properly cast. In the case of equality of votes, the Chairman shall have a second or casting vote. Proxy votes will not be permitted.
- F)** Amendments to Resolutions included in the Agenda of any General Meeting will be accepted for debate, it is recommended that all such amendments be carefully worded and that notice of such amendments be given to the Secretary seven days before the Meeting.
- G)** Separate Annual General Meetings of the Members of each Racing Class shall be held before the date of the Annual General Meeting of the Association in each year. Any resolutions passed on recommendations at such Class Meetings shall be submitted to the Annual General Meeting of the Association for approval.

### 2.4. Membership

- A)** Association membership is renewable annually and expires on the 31st. of December.
- B)** FULL MEMBERSHIP is open to an owner of a bona fide boat who for Membership must submit:-
  - i)** Form of Application for Membership (or renewal) and Boat Registration.
  - ii)** The relevant annual subscription.Membership is acquired when this document and subscription have been submitted to the Committee and approved by them. This approval may be withdrawn at any time at the discretion of the Committee
- C)** CREW MEMBERSHIP is open to any person or by application of a Full Member; and is acquired when such application is accepted by the Hon. Secretary.
- D)** HONORARY MEMBERSHIP may be conferred, by the Committee, on any person not for the time being actively engaged in racing with the Association.



The Commodores of the PYRA supporting clubs will be Honorary Members for the duration of their term of office.

- E)** Only Full Members may vote at the Association's Meetings, and only Full Members are eligible for election to the Offices of Captain of the Association or Captain or Vice Captain of the racing classes. Each boat carries only one vote.
- F)** The amounts of the Annual Subscriptions for all classes of Membership will be fixed annually at the Association's AGM. Membership forms are available from the Hon. Sec.
- G)** For the purposes of PYRA Membership the minimum requirements for a bona fide boat are defined in Part 2 Sections 2.0 and 3.0 of this book.
- H)** TEMPORARY MEMBERSHIP is open to yachtsmen for the purpose of competing in a maximum of two weekend's racing per season. Temporary Membership subscriptions will include payment for a copy of the PYRA Handbook and Programme. Applicants should notify the Hon. Secretary two weeks before participation to enable any rating/handicapping procedure to be carried out.

**Subscription Rates for 2021 are:**

Full Member\*: Mono-hull Class: £85 (Includes 2021 VPRS).  
Multi-hull Class: £70.

Crew Member\* (non-voting): £10.

Temporary Member Mono-hull class: £45 (Includes 2021 VPRS).

Temporary Member Multi-hull class: £25.

\*New applicants (non membership of PYRA for the preceding 5 years)  
for Full PYRA Membership:  
Mono-hull class: £55 (Includes 2021 VPRS).  
Multi-hull class: £40.00.  
For crew PYRA membership: No charge.

## 2.5. Constitution (Rules)

The Constitution and/or Rules of the Association may be added to, repealed or amended by resolution at any General Meeting of the Members of the Association providing that no such resolution shall be passed unless it is carried by a majority of two-thirds of the votes properly cast at the Meeting.

A Member wishing to propose any alteration to the constitution or Rules must give notice in writing to the Secretary of the Association of the Resolution at least 28 days before the date of the General Meeting, at which the proposal will be considered.

A copy of the resolution to be proposed shall be enclosed with, or incorporated in the Agenda of the General Meeting at which the proposal is to be considered, and such Agenda shall be circulated to all Members at least fourteen days before the date set for the Meeting.

## PART TWO: SAILING INSTRUCTIONS & NOTICE OF RACE

The PYRA Race Committee for each event shall comprise the Starting Officer nominated by the representative of the supporting club, together with any members of the General Committee attending the event.

### 1.0 Rules

**1.1.** Racing will take place under the World Sailing Racing Rules of Sailing 2021-24 (RRS), the World Sailing Offshore Special Regulations 2020-21, the prescriptions of the RYA, these sailing instructions and the appropriate class rules.

#### 1.2. Racing at Night

The rules of RRS Part 2 shall not apply between the times of local sunset and sunrise and shall be replaced with the corresponding rules of IRPCS (International Regulations for Preventing Collisions at Sea).

#### 1.3. Advertising

Boats may advertise in accordance with ISAF Regulation 20 (Advertising Code).

#### 1.4 Regattas

For regattas, separate instructions may be issued by the organising club.

### 2.0 Conditions of Entry

#### 2.1 General

- A)** A boat is entirely responsible for its own safety, whether afloat or ashore, and nothing, whether in the Notice of Race or Sailing Instructions or anywhere else, reduces this responsibility.
- B)** It is for the boat to decide whether it is fit to sail in the conditions in which it will find itself. By launching or going to sea, the boat confirms that it is fit for those conditions and that its crew is competent to sail and compete in them.
- C)** The boat is required to hold adequate insurance and in particular to hold insurance against third party claims in the sum of at least £2m.
- D)** Nothing done by the organisers will reduce the responsibility of the boat nor will it make the organisers responsible for any loss, damage, death or personal injury, however it may have occurred, as a result of the boat taking part in the racing. The organisers encompass everyone helping to run the race and the event, and include the organising authority, the race committee, the race officer, patrol boats and beachmasters.
- E)** The boat is responsible to ensure that it is equipped and seaworthy so as to be able to face extremes of weather; that there is a crew sufficient in number, experience and fitness to withstand such weather; and that the safety equipment is properly maintained, stowed and in date and that the crew know how to use it.

## 2.2. Eligibility

Racing is open to boats, whose particulars have been accepted by the Association. In addition the owner, or owner's representative, on board whilst racing, shall be a member of PYRA.

## 2.3. Race Entries

Entry lists shall close at 1200 hrs. on the Wednesday prior to the day of the race concerned, or, in the case of a race which starts on a Friday, the Tuesday before.

A boat shall be entered either by:-

**A)** Making an entry via the PYRA Web site Enter PYRA Event Page -

<http://www.pyra.org.uk/sailing/enter-pyra-event/>

**B)** Making an entry via e-mail to PYRA Sec: [secretary@pyra.org.uk](mailto:secretary@pyra.org.uk)

The subject of the e-mail shall be of the format:

Race Entry, Race Number and Boat Sail Number. The body of message shall be of the format:

**Race Title, Race Number, Sail Number, Boat Name, Class and Number of Persons on Board**

**C)** Making an entry on one of the lists for each event on the notice boards at the member clubs.

**D)** Making a line entry. A competitor finding it necessary to make a line entry as a result of failing to comply with A) or B) or C) above shall report to the Starting Officer stating their wish to enter the race and notify their Boat Name, Sail Number, VPRS, Class and Number of Persons on Board. This shall be done before the first "warning signal" of their class. Line entries should only be used in exceptional circumstances. Be aware that the Starting Officer will be busy and may not respond. Also, be aware that line entries are not accepted for some races - see the Race Programme.

**Note: For regattas, individual entries must be made directly to the organising club**

## 2.4. Identification of Classes

### MONO-HULLS

#### Class 1: Pennant 1

Open to boats having a current VPRS rating.

#### Class 2: Pennant 2

Open to boats having a current VPRS rating.

#### Class 3: Pennant 3

Open to boats having a current VPRS rating.

#### Class 4: Pennant 4

Open to boats having a valid VPRS rating for the current year and complying with these Sailing Instructions, qualified as defined in Class 4 notes below

### MULTI-HULLS

#### Class 5: Pennant 5

Open to boats having a valid multihull rating.

## NOTES

### Classes 1 to 4:

1. A valid VPRS rating is one registered on the VPRS Website calculated for the current year.

### Class 4:

2. Mono-hull Class 4: Ideal for couples, shorthanded or newcomers to racing - Straightforward Bay, Coastal and Channel racing in company - very good company!

If a declaration has been received that a spinnaker will not be used for a complete series before 1200 hr on the Wednesday prior to the day of the first race entered of the series concerned, or, in the case of a race which starts on a Friday, the Tuesday before, this will be noted on the Class 4 list and the no spinnaker TCC rating will be used for that series, otherwise TCC will be used.

If more than three persons are on board over the age of 7 years during a race each additional crew will incur a 5% time penalty per person. Number on board to be reported with finishing time.

Crew will be counted as 8 years old, or older, if they attained the age of 8 before the 1st September of the preceding PYRA sailing season (as per school years)

### Class 5:

3. A valid multihull rating is one provided by the Class 5 captain for the current year.

## 2.5 Division of Classes

The split between mono-hulled classes will be determined prior to the first race of the season based on VPRS ratings and will be posted with the list of PYRA boats maintained on the PYRA Website.

## 2.6. Rating/Handicapping

Results shall not count without a valid VPRS or multihull rating.

- A)** At the time of returning a signed PYRA membership form a current rating is not available the PYRA Secretary is to be informed by the owner/co-owner when a rating has been recorded on the VPRS website or provided by the Class 5 captain.
- B)** The PYRA secretary shall be notified by the owner/co-owner if a rating changes during the PYRA racing season.
- C)** No results shall count retrospectively.

**Note:** The PYRA Secretary shall maintain on the PYRA website and club notice boards a list of PYRA boats in their respective class together with the current rating being used for PYRA results.

## 2.7. Identification of Boats

- A)** Each boat shall fly its Class distinguishing flag in a clearly visible manner from the backstay or similar position.
- B)** Boats not complying with Sl.2.7A may not be recorded as starters or timed as finishers.

# 3.0 Safety

## 3.1. Race Categories

- A)** World Sailing Special Regulations for Inshore Racing will apply where the sailing area is confined to Poole Harbour, Poole and Swanage Bays.
- B)** World Sailing OSR Category 4 will apply to all races outside of the above limits between Portland Bill and Selsey Bill and within six miles of the shoreline.
- C)** World Sailing OSR Category 4 Plus PYRA special requirements will apply to all races outside of the above limits or between the hours of Sunset and Sunrise.

## 3.2. PYRA Special Requirements

- A)** Adequate Liferrafts shall be carried.
- B)** Adequate means of anchoring shall be carried.
- C)** A fixed VHF radio with capacity to transmit at 25 watts shall be fitted.
- D)** An engine plus fuel sufficient to motor in moderate sea conditions at four knots for the length of the course shall be carried.

## 3.3. Stability

- A)** Monohull boats
  - i) When sailing under World Sailing OSR Category 4 a minimum SSS of 12 shall apply.
  - ii) When sailing under World Sailing OSR Category 4 Plus PYRA special requirements a minimum SSS of 15 shall apply.

**Note - The SSS value can be found on the VPRS certificate.**

- B)** Multihull Stability can only be ensured by using the appropriate sail plan suitable for the prevailing weather and sea state. Owner skippers must request and comply with manufacturer's recommendations with respect of suitable sail plans for different wind strengths. This should include a reduction factor to be applied when sailing in rough conditions, when sailing down wind, when sailing in gusty winds and when sailing with novice crew.

### 3.4. Basic Safety Requirements

In addition to para 3.1, 3.2 and 3.3 above and the World Sailing OSR.

**A)** Identification of Persons on Board

At the time of entering skippers are required to notify PYRA of the names and contact details of all persons on board (POB) and if necessary to update the information prior to the start of the race.

**B)** Lifejackets / Harnesses

All persons on board are strongly recommended to wear lifejackets as a regular practise and in addition to use harnesses when reefed, at night or when alone on deck. At night it is recommended that life jackets are fitted with a position indicating light.

**C)** AIS

It is recommended that vessels are equipped with AIS.

**D)** RYA SafeTrx

Owners are strongly recommended to use the RYA SafeTrx system to aid Co-ordination Centres throughout the UK to mount a search and rescue operation should you get into difficulty.

## 4.0 Communications with Competitors

### 4.1. Radio Communications

- A)** All boats shall be equipped with VHF radio capable of receiving Ch37 and Ch.M2 (161.425 MHz) which, on some systems, may be referred to differently, eg P4 on Icom sets). A listening watch must be maintained until clear of the starting area. Competitors are advised to keep a listening watch for the duration of the race.
- B)** Radio communications with competitors will normally be by VHF radio Ch M2 (P4). In the event of this channel being blocked Ch M (37) may be used.

### 4.2. Alterations to Sailing Instructions

- A)** Notice of any alterations to the Sailing Instructions may be posted on the Notice Boards of the member clubs. It shall be the responsibility of the competitors to acquaint themselves with any such alterations.
- B)** Changes on the day may be made by Class Captains or their delegate if conditions dictate. This information will be conveyed to competitors as per S.I.4.1. (See also 7.8 b)

### 4.3. Postponement and Abandonment

In the event of a race being postponed or abandoned signals shall be made in accordance with the RRS, except that:

In the event of abandonment competitors will be notified as per S.I.4.1. at approximately 60 and 30 minutes before the advertised first start time in that starting sequence and at that advertised time.





## FLY THE FLAG!

**NEW PYRA battle flags  
available for just £10 from the  
Association Secretary**

### 5.0 Race Programme 2021

- A)** COURSES WILL BE ANNOUNCED ON VHF as per SI 4.1 & 7.2.
- B)** The final announcement of course will be after the 4-minute gun.
- C)** Courses may be based on the list of marks in SI 6.0 and any feature on a current Admiralty Chart, any other established racing mark, and a gate or gates between points clearly identified by both longitude and latitude.

#### **5.1 Schedule of Races. All times are BST.**

Abbreviations used in this programme:

<b>SC:</b> Supporting Club	<b>ST:</b> Start Time	<b>Sr:</b> Series
<b>SL:</b> Starting Line	<b>FL:</b> Finish Line	<b>TL:</b> Time Limit
<b>Pass A:</b> Passage A	<b>Pass B:</b> Passage B	<b>SH:</b> Solent Hop
<b>Ch:</b> Channel	<b>PtoP:</b> Poole to Poole	<b>TBA:</b> To Be Announced
<b>RV:</b> Location for results to be handed in when away from Poole		

**RACES ARE SELF-TIMING IN ACCORDANCE WITH SI 9.3,  
EXCEPT FOR RACE No: 3, 4, 5, 6, 7, 8, 9, & 10**

## **IMPORTANT: Rendezvous – RV**

**The RV is where we meet to discuss the day's sailing.  
As RV are affected by the changing health crisis regulations  
this year RV Locations will be announced nearer the event.**

~

**Please bring along your finish time and TMF so that provisional  
results can be calculated.**

**Remember you will still need to contact Matt Hitt, the Records  
Secretary, on your return home.**



**Our aim is to  
be the best  
supplier of  
Marine Services  
by providing  
outstanding  
value to our  
customers**



## **Who Are We?**

We are an established registered and fully insured company that is run by boat enthusiasts for boating enthusiasts. Based in Poole we cover across the south coast from Hamble to Portland.

With our varied experience we are able to offer a wide range of products and services.

## **What Can We Do?**

- |                                    |                                       |                                  |
|------------------------------------|---------------------------------------|----------------------------------|
| • Services                         | • Tuition                             | • Sea Trials                     |
| • Maintenance Contracts            | • Chandlery                           | • Valeting                       |
| • Electrical Work                  | • Rigging                             | • Polishing                      |
| • Shore Power Systems              | • Antifouling                         | • Mechanical and Servicing       |
| • Engine Servicing and Winterising | • Launch and Recovery Service         | • Brokerage                      |
| • Emergency Callout                | • Sail and Canvas Fitting and Repairs | • Boat deliveries by Road or Sea |

## **Contact**

**For a competitive quote please contact:**

**Neil Phillips or Daniel Wootton on 01202 022891**

**or Email: [info@completemarinesolutions.co.uk](mailto:info@completemarinesolutions.co.uk)**

**Visit our Website: [www.completemarinesolutions.co.uk](http://www.completemarinesolutions.co.uk)**

**or look at our Facebook Page: Complete Marine Solutions**

## Saturday April 17th

## Poole – Yarmouth

Race No.1	Classes	ST	Sr	Trophy
SC: Parkstone	5	10:00		None allocated
SL: Bay	4	10:05		Lucy's Pup
FL: Yarmouth I	3	10:05		Lucy
TL: 18.00	2	10:10		Hurst Cup
	1	10:10		Hurst Cup

RV - TBA 17.50

Finish Time	Boat in front	Boat behind
-------------	---------------	-------------

## Sunday April 18th

## Yarmouth – Poole

Race No.2	Class	ST	Sr	Trophy
SC: Parkstone	5	13:00		None allocated
SL: Yarmouth	4	13:05		Sula Tankard
FL: Poole	3	13:05		Dolphin Trophy
TL: 22.00	2	13:10		Wally Baker
	1	13:10		Membury Cup

Finish Time	Boat in front	Boat behind
-------------	---------------	-------------

# PYRA Poole Bay Regatta

## Saturday May 1st

## Bay Regatta Poole Bay Regatta/Coaching

See - <https://www.pyra.org.uk/sailing/2021-events-early-season/2021-poole-bay-regatta-and-coaching-weekend/>

SC: PYRA

## Sunday May 2nd

## Bay Regatta

## Poole Bay Regatta

See - <https://www.pyra.org.uk/sailing/2021-events-early-season/2021-poole-bay-regatta-and-coaching-weekend/>

Race Nos.4+5

SC: PYRA

## Monday May 3rd

## Bay Regatta

## Navigators' Challenge

See - <https://www.pyra.org.uk/sailing/2021-events-early-season/2021-poole-bay-regatta-and-coaching-weekend/>

Race No.6

SC: PYRA



**Expert insurance** advice and quality  
cost-effective insurance protection

As sailors ourselves  
we understand your  
insurance needs

03333 609 886  
[www.stoneways.co.uk](http://www.stoneways.co.uk)

**STONEWAYS**  
MARINE

Terms and Conditions apply. Stoneways Marine is a trading name of Stoneways Insurance Services Ltd (FRN 809761) and is an Appointed Representative of KBIS Ltd (FRN 300861).

Saturday May 15th				Two Handed Series
Race No.7/8/9	Class	ST	Sr	Trophy
SC: Royal Motor	5	10.00	2H	None allocated
SL: Bay	4	10.05	2H	Moonspray
FL: Committee	3	10.05	2H	Tarka
TL: 18.00	2	10.10	2H	Helmsmans
	1	10.10	2H	Helmsmans

*RV - TBA – TBA*

Sunday May 16th			Pursuit Race
Race No.10	First Start 10.30		Trophy
			Morning Brig for first overall

<https://www.pyra.org.uk/sailing/2021-events-early-season/2021-pursuit-race/>

*RV - TBA 14.00*

Friday May 28th		Port Chantereyne		Poole – Cherbourg	
Race No.11	Class	ST	Sr	Trophy	
SC: Poole	5	19:00	Ch		
SL: Swash	4	19:05	Ch	Eldridge Pope	
FL: Cherbourg	3	19:05	Ch	Eldridge Pope	
TL: 18.00 29/5	2	19:10	Ch	Jubilee	
TL: 18.00 29/5	1	19:10	Ch	Zilla	

*RV - TBA 18.00 29/5*

Finish Time	Boat in front	Boat behind
-------------	---------------	-------------

Sunday May 30th		Port Chantereyne	Cherbourg – Portland	
Race No.12	Class	ST	Sr	Trophy
SC Poole	5	08:00	Ch	
SL Cherbourg	4	08:05	Ch	Windward Tankard
FL Portland	3	08:05	Ch	Vaubin
TL23:00	2	08:10	Ch	Spring Cup
	1	08:10	Ch	Oriana

*RV - TBA 17.50*

Finish Time	Boat in front	Boat behind
-------------	---------------	-------------

Monday May 31st				Portland – Poole
Race No.13	Class	ST	Sr	Trophy
SC Poole	5	09:30	Ch	
SL Weymouth	4	09:35	Ch	
FL Poole	3	09:35	Ch	
TL 18:00	2	09:40	Ch	
	1	09:40	Ch	

Finish Time	Boat in front	Boat behind
-------------	---------------	-------------



**20% DISCOUNT  
ON YOUR VISITOR  
BERTHING FEES  
IN CHERBOURG**

**Sail to Port Chantereyne to experience  
the French way of life and benefit  
from a 20% discount on your visitor  
mooring fees\***

**Port Chantereyne boasts the fol-  
lowing fantastic features that are  
truly unique along this stretch of  
French coastline :**

- Well protected marina accessible 24h/24
- Modern marina facilities
- Specifically designed and equipped to accommodate all the needs of boaters
- Located in a typical French city-centre with its large selection of boutiques, bars, restaurants, gardens, parks and museums.

\* The 20% discount will apply on presentation of a personal visitor's card to the marina office.  
The discount does not apply to arrival berths or second berths and cannot be combined with any other offers.

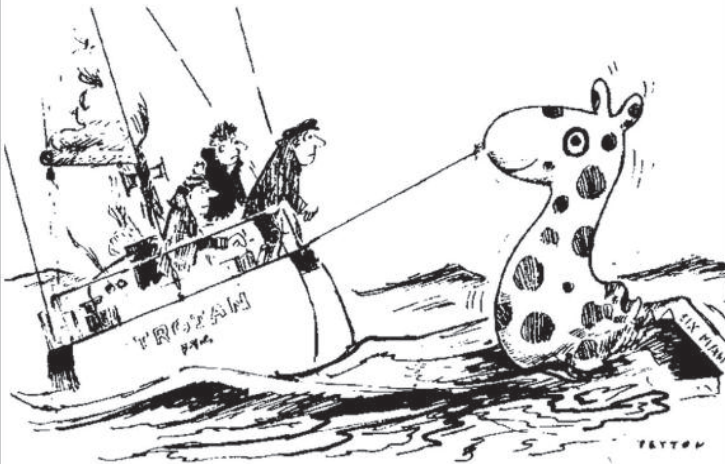
**CHERBOURG**  
en Cotentin



**PORT CHANTEREYNE**  
50100 Cherbourg-en-Cotentin  
Tél : +33 (0)2 33 87 65 70  
VHF Canal 9 / Channel 9  
E-mail : portchantereyne@cherbourg.fr  
www.portchantereyne.fr



***"Don't hire one, you said – borrow  
one, you said – it's cheaper, you said"***



**Check our hire rates - from 4 days to 3 years - on rafts from 4 to 14 persons**

Send for our FREE  
info pack and depot list

**0800  
243673**

[www.liferafts.com](http://www.liferafts.com)

[info@liferafts.com](mailto:info@liferafts.com)

Fax: 01621 785934

**LIFERAFT & DINGHY  
SERVICING**

Liferaft House  
Burnham-on-Crouch  
Essex. CMO 8TE



Saturday June 12th	Tapper	Poole – Weymouth
--------------------	--------	------------------

Race No.14	Class	ST	Sr	Trophy
SC: Poole	5	11:00	Pass A	
SL: Bay	4	11:05	Pass A	One trophy for the weekend
FL: Weymouth	3	11:05	Pass A	One trophy for the weekend
TL: 18.00	2	11:10	Pass A	One trophy for the weekend
	1	11:10	Pass A	One trophy for the weekend

RV - TBA 17.50

Finish Time	Boat in front	Boat behind
-------------	---------------	-------------

Sunday June 13th	Tapper	Weymouth – Poole
------------------	--------	------------------

Race No.14	Class	ST	Sr	Trophy
SC: Poole	5	08:00	Pass A	None allocated
SL: Weymouth	4	08:05	Pass A	Alan Kerr
FL: Poole	3	08:05	Pass A	Hagg
TL: 19.00	2	08:10	Pass A	Norlethe
	1	08:10	Pass A	Weymouth

Finish Time	Boat in front	Boat behind
-------------	---------------	-------------

Saturday June 19th	Quay West Chandlery	Bay Races
--------------------	---------------------	-----------

Races No.16/17	Class	ST	Sr	Trophy
SC: PYRA	5	10:30	PtoP	None allocated
SL: Bay	4	10:35	PtoP	TBA
FL:	3	10:35	PtoP	TBA
TL: 18:00	2	10:40	PtoP	TBA
	1	10:40	PtoP	TBA

RV - TBA

Sunday June 20th	Quay West Chandlery	Bay Races
------------------	---------------------	-----------

Races No.18/19	Class	ST	Sr	Trophy
SC: PYRA	5	10.30	PtoP	None allocated
SL: Bay	4	10.35	PtoP	TBA
FL: Poole	3	10.35	PtoP	TBA
TL: 18.00	2	10.40	PtoP	TBA
	1	10.40	PtoP	TBA

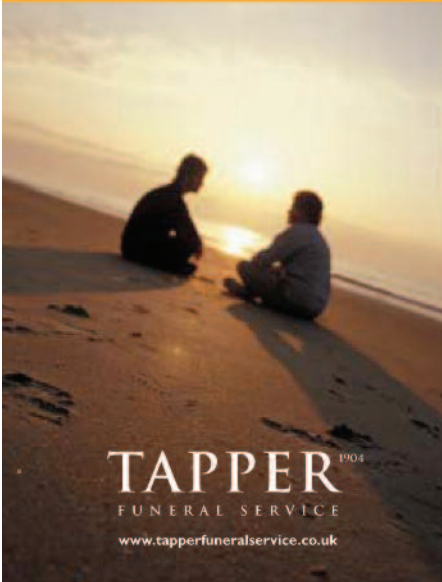
# PYRA On Tour to Dartmouth

June  
19th – 27th

Class	ST
5	10.30
4	10.35
3	10.35
2	10.40
1	10.40

See Separate Notice of Race - <https://www.pyra.org.uk/sailing/2021-events/2021-pyra-on-tour-to-dartmouth/>

## A FAMILY TRADITION... A HELPING HAND



**TAPPER**<sup>1904</sup>  
FUNERAL SERVICE  
[www.tapperfuneralservice.co.uk](http://www.tapperfuneralservice.co.uk)

Founded in 1904, the Tapper family offer funeral homes with modern facilities and staff with traditional values.

**POOLE**  
32-34 Parkstone Road  
**01202 673164**

**RINGWOOD**  
29 Southampton Road  
**01425 472104**

**BROADSTONE**  
173 The Broadway  
**01202 694449**

**HIGHCLIFFE**  
257 Lymington Road  
**01425 272764**

**MILFORD-ON-SEA**  
Wallis House, 28 High St  
**01590 644664**

**BOURNEMOUTH**  
987 Wimborne Rd, Moordown  
**01202 549555**

**NEW MILTON**  
51-53 Old Milton Road  
**01425 629000**

All Funeral Homes offer: Prepayment Plans | Private Chapel of Rest | Daimler Vehicles | 24 Hour Service | Car Parking

# Quay West

## ~ Chandlers ~



Situated within  
Parkstone Yacht Club

*Pete Trew*

is pleased to support  
PYRA

**Quay West Chandlers • Parkstone Yacht Club**  
**Pearce Avenue, Parkstone, Poole BH14 8DL**  
**01202 732233 • [info@quaywestmarine.co.uk](mailto:info@quaywestmarine.co.uk)**

## Friday July 2nd

## Stoneways Marine

## Poole – Cowes

Race No. 20	Class	ST	Sr	Trophy
SC: Parkstone	5	10:00	Pass A	None allocated
SL: Bay	4	10:05	Pass A	Salamander Cup
FL: Medina	3	10:05	Pass A	Chrysalis Cup
TL: 19:00	2	10:10	Pass A	Margaret Sewell
	1	10:10	Pass A	Weil Challenge

*RV - TBA 17.50*

Finish Time	Boat in front	Boat behind
-------------	---------------	-------------

## Sunday July 4th

## Stoneways Marine

## Cowes – Poole

Race No. 21	Class	ST	Sr	Trophy
SC: Parkstone	5	09:00	Pass A	None allocated
SL: Cowes	4	09:05	Pass A	Chough Cup
FL: Poole	3	09:05	Pass A	Morrison Challenge
TL: 18:00	2	09:10	Pass A	Keene Memorial
	1	09:10	Pass A	Avilion Cup

Finish Time	Boat in front	Boat behind
-------------	---------------	-------------

## Friday July 16th

## Morgan Carey Architects

## Poole – Alderney

Race No.22	Class	ST	Sr	Trophy
SC: Poole	5	07:00	Ch	Coupe de Notaire
SL: Swash	4	07:05	Ch	Bass
FL: Alderney	3	07:05	Ch	Herbert Ballam Trophy
TL: 23.59	2	07:10	Ch	
	1	07:10	Ch	Casino

*RV – Alderney SC 17.50 17/07/21*

Finish Time	Boat in front	Boat behind
-------------	---------------	-------------

## Sunday July 18th

## Morgan Carey Architects

## Alderney – Poole

Race No.23	Class	ST	Sr	Trophy
SC: Poole	5	06:00	Ch	Coupe de L'Amite
SL: Alderney	4	06:05	Ch	Yarmouth Challenge
FL: Poole	3	06:05	Ch	Herbert Ballam Cigarette Box
TL: 22:00	2	06:10	Ch	Clipper Cup
	1	06:10	Ch	Ocean Challenge

Finish Time	Boat in front	Boat behind
-------------	---------------	-------------





## Boat House Bouldnor Isle of Wight



MORGAN CAREY  
ARCHITECTS

[www.morgancarey.co.uk](http://www.morgancarey.co.uk)

Tel: 01929 557878



Saturday July 24th	Kemp Sails	Poole – Portland
--------------------	------------	------------------

Race No.24	Class	ST	Sr	Trophy
SC: Poole	5	10:30	Pass A	
SL: Bay	4	10:35	Pass A	Chrysalis
FL: Portland	3	10:35	Pass A	Poole Bowl
TL: 18:00	2	10:40	Pass A	Dorset
	1	10:40	Pass A	Cecil Oxford

RV - TBA 17:50

Finish Time	Boat in front	Boat behind
-------------	---------------	-------------

Sunday July 25th	Kemp Sails	Portland – Poole
------------------	------------	------------------

Race No. 25	Class	ST	Sr	Trophy
SC: Poole	5	08:00	Pass A	
SL: Weymouth	4	08:05	Pass A	Jubilee Cup
FL: Poole	3	08:05	Pass A	Tamarisk
TL: 18:00	2	08:10	Pass A	Wareham Race Cup
	1	08:10	Pass A	Walter Curry

Finish Time	Boat in front	Boat behind
-------------	---------------	-------------

Saturday August 7th	Marqco Marquees	Poole – Lymington
---------------------	-----------------	-------------------

Race No.26	Class	ST	Sr	Trophy
SC: Parkstone	5	13:00	Pass B	One trophy for the weekend
SL: Bay	4	13:05	Pass B	Starleap
FL: Lymington- I	3	13:05	Pass B	Carbetty
TL: 20.00	2	13:10	Pass B	Grenadier
	1	13:10	Pass B	Stampede

RV - TBA 17.50

Finish Time	Boat in front	Boat behind
-------------	---------------	-------------

Sunday August 8th	Marqco Marquees	Lymington – Poole
-------------------	-----------------	-------------------

No. 27	Class	ST	Sr	Trophy
SC: Parkstone	5	11.00	Pass B	Island Hop Tankard
SL: Lymington	4	11.05	Pass B	Leo Toms
FL: Poole	3	11.05	Pass B	Wendy Cup
TL: 19:00	2	11.10	Pass B	Minoru Cup
	1	11.10	Pass B	Lundy Lady

Finish Time	Boat in front	Boat behind
-------------	---------------	-------------

**SALES & SERVICE CENTRE**

Endeavour Quay, Gosport  
Tel. +44 (0)2392 808717

**Kemp  
Sails**

**SAILMAKING CENTRE**

Wareham, Dorset  
Tel. +44 (0)1929 554308

QUALITY CRUISING & RACING SAILS  
SPINNAKERS & CRUISING CHUTES  
SAIL COVERS



SAIL SERVICING AND VALETING  
DODGERS & SPRAYHOODS  
MAINSAIL 'PACKAWAYS'

*ALL products are designed and made in U.K.*

**info@kempsails.com**

**www.kempsails.com**



Make your party, function or  
event **truly fabulous**

**John Short**

T: 01258 459861 [www.marqco.co.uk](http://www.marqco.co.uk)

M: 07787825548 [info@marqco.co.uk](mailto:info@marqco.co.uk)

**Parties | Weddings | Corporate**

**Friday August 20th****Poole – St Vaast**

<b>Race No. 28</b>	<b>Class</b>	<b>ST</b>	<b>Sr</b>	<b>Trophy</b>
SC: Poole	5	07:30	Ch	
SL: Swash	4	07:35	Ch	Cheltenham
FL: St Vaast	3	07:35	Ch	Coupe Vaubin
TL: 07:00 21/08/21	2	07:40	Ch	Lively
	1	07:40	Ch	Beach Trophy

**RV - TBA 17:50 21/08/21**

Finish Time	Boat in front	Boat behind
-------------	---------------	-------------

**Sunday August 22nd****St Vaast – Poole**

<b>Race No. 29</b>	<b>Class</b>	<b>ST</b>	<b>Sr</b>	<b>Trophy</b>
SC: Poole	5	08:00	Ch	Poole Yachting Week 1970
SL: St Vaast	4	08:05	Ch	Dolphin Cup
FL: Poole	3	08:05	Ch	Turnstone
TL: 23.59	2	08:10	Ch	Jim Bradbury
	1	08:10	Ch	WH Cole

Finish Time	Boat in front	Boat behind
-------------	---------------	-------------

**Friday August 27th****Poole Sailing****Poole – Lymington**

<b>Race No. 30</b>	<b>Class</b>	<b>ST</b>	<b>Sr</b>	<b>Trophy</b>
SC: Parkstone	5	10:00	Pass B	None allocated
SL: Bay	4	10:05	Pass B	Harold Austin
FL: Lymington-I	3	10:05	Pass B	Gay Viking
TL: 18:00	2	10:10	Pass B	Seafarer Challenge
	1	10:10	Pass B	PYRA Poole Bowl

**RV - TBA 17:50**

Finish Time	Boat in front	Boat behind
-------------	---------------	-------------

**VPRS National Championships**

**Saturday/Sunday**  
**August 28th/29th**

**See Separate Notice of Race - <https://www.pyra.org.uk/sailing/2021-events/2021-lymington-vprs-nationals/>**



## **Expert Yacht Tuition from Beautiful Poole Harbour**

**[www.PooleSailing.co.uk](http://www.PooleSailing.co.uk)**

**07966-155716**

**[info@PooleSailing.com](mailto:info@PooleSailing.com)**

- Master Classes in Sail Trim  
and Boat Handling**
- Race Training and Offshore  
Yacht Racing with PYRA**
- RYA Courses, All Levels from  
Start Yachting to Yachtmaster**

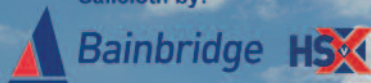
# **POOLE SAILING**

# PERFORMANCE HYBRID

**UPGRADE™**

- ↑ Performance
- ↑ Reliability
- ↑ Durability
- ↑ Handling

Sailcloth by:



HSX-V The latest advance in weaving technology using super low stretch VECTRAN fibres in a load bearing RIPSTOP MATRIX - giving high-performance, forgiving handling qualities. Also available in White.

Photo © Graham Sook Photography

CRUSADER SAILS The Sail Loft, Hatch Pond Road, Poole, BH17 0JZ, UK  
+44 (0) 1202 670580 [info@crusadersails.com](mailto:info@crusadersails.com) [www.crusadersails.com](http://www.crusadersails.com)





## Monday August 30th Poole Sailing Lymington – Poole

Race No.31	Class	ST	Sr	Trophy
SC: Parkstone	5	08:00	Pass B	None allocated
SL: Lymington	4	08:05	Pass B	Island Hop C14
FL: Poole	3	08:05	Pass B	Island Hop C13
TL: 18:00	2	08:10	Pass B	Island Hop C12
	1	08:10	Pass B	Island Hop C11

Finish Time	Boat in front	Boat behind
-------------	---------------	-------------

## Saturday August 24th Poole – Yarmouth Dash

Race No.32	Class	ST	Sr	Trophy
SC: Royal Motor	5	09:00	PtoP	
SL: Bay	4	09:05	PtoP	
FL: Yarmouth- I	3	09:05	PtoP	
TL: 14:00	2	09:10	PtoP	
	1	09:10	PtoP	

RV - TBA - TBA

Finish Time	Boat in front	Boat behind
-------------	---------------	-------------

## Sunday August 30th Yarmouth – Poole Dash

Race No.33	Class	ST	Sr	Trophy
SC: Royal Motor	5	15:00	PtoP	
SL: Yarmouth	4	15:05	PtoP	
FL: Poole	3	15:05	PtoP	
TL: 20:00	2	15:10	PtoP	
	1	15:10	PtoP	

Finish Time	Boat in front	Boat behind
-------------	---------------	-------------

## Sunday September 12th Bay Race

Race No.34	Class	ST	Sr	Trophy
SC: Parkstone	5	13:00	PtoP	None allocated
SL: Bay	4	13:05	PtoP	TBA
FL:	3	13:05	PtoP	TBA
TL: 18.00	2	13:10	PtoP	TBA
	1	13:10	PtoP	TBA

Finish Time	Boat in front	Boat behind
-------------	---------------	-------------



**Saturday 25th September****Magnum****Poole – Weymouth**

<b>Race No.35</b>	<b>Class</b>	<b>ST</b>	<b>Sr</b>	<b>Trophy</b>
SC: Poole	5	13:00	Pass B	None allocated
SL: Bay	4	13:05	Pass B	One trophy for the weekend
FL: Weymouth	3	13:05	Pass B	One trophy for the weekend
TL: 20:00	2	13:10	Pass B	One trophy for the weekend
	1	13:10	Pass B	One trophy for the weekend

**RV - TBA 17.50**

Finish Time	Boat in front	Boat behind
-------------	---------------	-------------

**Sunday 26th September****Magnum****Weymouth – Poole**

<b>Race No.36</b>	<b>Class</b>	<b>ST</b>	<b>Sr</b>	<b>Trophy</b>
SC: Poole	5	09:00	Pass B	None allocated
SL: Weymouth	4	09:05	Pass B	Arnold Newman
FL: Poole	3	09:05	Pass B	Fiat Hitachi Plate
TL: 18:00	2	09:10	Pass B	Arri Paye
	1	09:10	Pass B	David Maddox

Finish Time	Boat in front	Boat behind
-------------	---------------	-------------

**Saturday 9th October****Poole – Bucklers Hard**

<b>Race No.37</b>	<b>Class</b>	<b>ST</b>	<b>Sr</b>	<b>Trophy</b>
SC: Parkstone	5	09:00	Pass B	None allocated
SL: Bay	4	09:05	Pass B	Contessa Trophy
FL: Beaulieu	3	09:05	Pass B	Christchurch Ledge
TL: 17:00	2	09:10	Pass B	Tantarin Cup
	1	09:10	Pass B	Tilney Barton

**RV - TBA 17.50**

Finish Time	Boat in front	Boat behind
-------------	---------------	-------------

**Sunday 10th October****Bucklers Hard – Poole**

<b>Race No. 38</b>	<b>Class</b>	<b>ST</b>	<b>Sr</b>	<b>Trophy</b>
SC: Parkstone	5	12.30	Pass B	None allocated
SL: Beaulieu	4	12.35	Pass B	Poole Bay
FL: Poole	3	12.35	Pass B	B Points Islands
TL: 19:00	2	12.40	Pass B	Mowlam Cup
	1	12.40	Pass B	Regina Bowl

Finish Time	Boat in front	Boat behind
-------------	---------------	-------------



## Magnum IV: sponsor of the Weymouth Weekend

SEE: <https://www.youtube.com/watch?v=PmOEAAEd0yk>



## 5.2 Races for Points Series

**5.2.1** To win a series a boat must finish correctly in at least two races in that series.

**5.2.2** A boat that enters races but does not come to the start area in any race in a series shall not be scored in the series.

### 5.2.3 Races to Count in a series

The Low Point scoring system of RRS Appendix A4 will apply.

The number of races to count is as below; this changes RRS Appendix A2

Races Sailed in a Series	Races to Count	No. of Discards
1	1	0
2	2	0
3	3	1
4	4	1
5	4	2
6	5	2
7	6	2
8	6	3
9	6	3

### 5.2.3 Races to Count in a Series

The Low Point scoring system of RRS

Appendix A4 will apply.

The number of races to count is as right:

this changes RRS Appendix A2

### 5.2.4 Overall points winner in each Class

Best 10 results to count to include 7 Passage, 3 Channel.

If no boat qualifies then the best 10 passage or channel results will count.

### 5.2.5. Boat with age allowance all classes winner

The same criteria regarding the number of races to count as defined for the overall points winner will be used to calculate the winning boat. Boats eligible for the award will be defined by using their build date declared on their VPRS or MOCRA certificates, if no build date is declared the current year will be assumed.

The build dates to be used will be derived by listing all the PYRA boats on the class lists at the end of the season in build date order and working from the oldest until 10% (rounded up) of the total boats on the list have been included. All boats built in or before the year of the newest boat in the 10% list will be eligible for consideration of the award.

## 6.0 Marks

Alum Chine Outfall	(50,42.32N 01,53.40W)	North Head	(50,42.69N 01,35.52W)
Atomic Buoy (was Arish Mell Outfall)	(50,35.07N 02,11.67W)	Perenco Wyck Farm	(50,40.31N 01,52.45W)
Bar Buoy (No 1)	(50,39.32N 01,55.17W)	Peveril Ledge	(50,36.37N 01,56.10W)
Beaulieu Spit Dolphin (timber tripod) (FR5s).	(50,46.85N 01,21.76W)	Rig Buoy (CSC Race Mark)	(50,43.01N 01,38.02W)
Boscombe Outfall	(50,42.89N 01,50.39W)	Southbourne Outfall	(50,42.92N 01,49.11W)
*Berthon SRM2F	(50,44.20N 01,29.22W)	Shore Road	(50,41.47N 01,55.39W)
Bournemouth Outfall	(50,42.60N 01,52.31W)	Stevenson Moorings	(50,39.45N 01,56.85W)
Branksome Outfall	(50,42.25N 01,54.31W)	*Stokes Bay East – SRM5E – was Darling Associates	
*Caldwells Estate Agents SRM25	(50,43.15N 01,27.49W)	Architects	(50,46.26N 01,08.76W)
*Charles Stanley SRM22	(50,42.86N 01,29.40W)	Stoneways Marine Insurance	(50,40.31N 01,54.02W)
Chalys	(50,38.61N 01,55.78W)	Swash Channel No 2	(50,39.23N 01,55.24W)
*Coronation SRM4B	(50,49.55N 01,17.62W)	Swash Channel No 3	(50,39.76N 01,55.49W)
*Dunford SRM2B	(50,43.38N 01,31.54W)	Swash Channel No 4	(50,39.72N 01,55.60W)
DZB Buoy	(50,32.11N 02,05.92W)	Swash Channel No.8	(50,40.50N 01,56.26W)
East Hook	(50,40.58N 01,55.23W)	*South West Shingles SRM1G	(50,39.29N 01,37.52W)
East Looe 2	(50,41.07N 01,55.83W)	*Test PHM SRM76	(50,52.59N 01,23.45W)
*Gurnard	(50,46.22N 01,18.84W)	The Rig Shop (was Vinyl Solutions)	(50,41.08N 01,54.26W)
Hengistbury Head	(50,42.55N 01,44.38W)	Warden SHM SRM1M	(50,41.48N 01,33.55W)
Jenkins Marine	(50,41.24N 01,52.67W)	*Weston Shelf SHM SRM7D	(50,52.71N 01,23.26W)
*Kilburn & Strode Patents & TMs SRM3G		*YachtDataBank SRM3E	(50,46.13N 01,22.19W)
-was Sevenstar Yacht Transport	(50,46.58N 01,21.46W)		
Ledge Buoy	(50,41.60N 01,41.50W)		
Mid Bay Buoy (CSC Race Mark)	(50,42.60N 01,40.80W)		

**Note:**

All positions are referenced to the WGS84 datum and are approximate.

**\*Identifies Solent Marks**

## 7.0 Starts

### 7.1 Starting System

Either a Line Start or a Gate Start may be used for monohull races. Gate Starts are not to be used for multihull starts. For a Line Start S.I. 7.2 will apply and S.I. 7.5 will not; for a Gate Start S.I. 7.5 will apply and S.I. 7.2 will not.

When a Gate Start is to be used competitors will be informed in accordance with S.I. 4.1.

### 7.2 Starting Lines

A Committee Boat Line will be a line between the main mast of the Committee Boat and an Outer Distance Mark (ODM). The boat may be identified by a PYRA Battle Flag and shall broadcast its location together with a description and location of the ODM to competitors on VHF as per S.I. 4.1. The ODM may be laid specifically for the purpose, but could be any suitable mark or buoy used for racing or navigation.

**This S.I. is over ruled if the Starting Officer elects to use an alternative line start method – see S.I. 7.3.1.**

#### Alderney Starting Line:

A Committee Boat Line.

#### Bay Starting Line:

A Committee Boat Line.

**Alternative:** A Committee

Boat line in Brownsea Roads.

**Beaulieu River Starting Line:** A Committee Boat Line to the West of the Beaulieu River mouth.

**Bembridge Starting Line:** A Committee Boat Line.

#### Brownsea Starting Line:

A line between No.15 (Bell) Buoy and the Starting Boat positioned to the west.

#### Cherbourg Starting Line:

A Committee Boat Line in the Grande Rade in the vicinity of the Fort du Homet.

**Cowes Starting Line:** A Committee Boat Line in the vicinity of the Gunard Buoy.

**Gosport Starting Line:** Committee Boat Line in the vicinity of Spit Sand Fort.

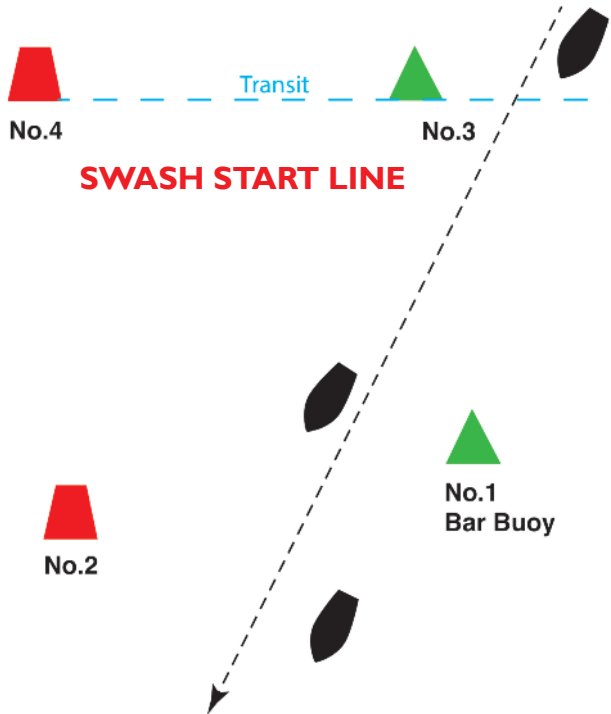
**Guernsey Starting Line:** A Committee Boat Line.

**Hamble Starting Line:** A Committee Boat Line.

**Lymington Starting Line:** A Committee Boat Line to the west of the Lymington river mouth.

**North Head Starting Line:** A Committee Boat Line using North Head Buoy as the ODM.

**Regatta Starting Line:** A Committee Boat Line.



Start Lines continued >>>>>>>



**Royal Motor Yacht Club Starting Line:** A line between the Flagstaff on the RMYC veranda with an orange top section and a port hand marker.

If it is thought necessary to start in Poole Harbour the Committee Boat Starting Officer must comply with the Poole Harbour Commissioners Yacht Racing Criteria. Note that the Harbour Control Officers have the authority to prohibit racing through the entrance if they believe that the conditions and circumstances pose too great a risk.

**St Vaast Starting Line:** A Committee Boat Line in the vicinity of the La Dent (South Cardinal) Buoy or Le Gavendest (South Cardinal) Buoy.

**Swanage Bay Starting Line:** A Committee Boat Line.

**Swash Starting Line:** Leave Swash Channel Buoy No 3 to starboard on a transit formed between Swash Channel Buoys No.3 and No.4. The Start Boat will act as the ODM but may not be on the line. All competitors shall then pass between Swash Channel Buoys No 1 and No 2.

**SEE ILLUSTRATION ON PAGE 33**

**Weymouth Starting Line:** A Committee Boat Line.

**Yarmouth Starting Line:** A Committee Boat Line to the east of the pier.

## 7.3 Alternative Line Starts

### 7.3.1 Alternative line start methods

The Starting Officer may use an alternative strategy to minimise the time taken to start both the race and the Starting Committee Boat, while providing a fair and clearly defined start for all competitors. These alternative line start methods may result in a lack of visual signals. This S.I. over rules the RRS Rule 26 requirement regarding visual signals when an alternative line start method is used as defined below.

**7.3.1.1 Fixed Marks** – Using a line between two points/buoys with the Start Boat hovering outside of the line.

**7.3.1.2 Transit Start** – Using 2 fixed marks/features to form a transit, with the start line along an extension of the transit limited by the Start Boat as ODM.

**7.3.1.3 Hover Start** – The Start Boat hovers at one end of a line set off a fixed mark, using the motor to stem the tide.

**7.3.1.4 Convoy + Fender** – On occasions of little or no wind, the Start Boat may signal by VHF to 'follow me' and set off towards the destination leading the fleet until a sailing breeze materialises. If the Starting Officer cannot then find a suitable fixed mark, a fender or dan-buoy will be floated and used as an ODM to define a line off the Start Boat. The Start Boat will then drift with the tide hopefully in harmony with the ODM.

### 7.3.2 Time for Starting

Any boat acting as a Start Boat shall make every effort to start as soon as possible after the completion of her duties and to avoid all unreasonable delay in starting.

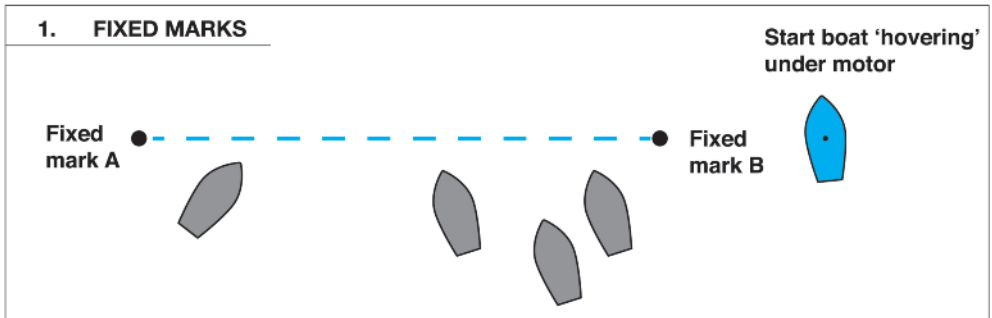
### 7.3.3 Away Starts

For starts other than from Poole, the Race Committee may vary all instructions to suit changed circumstances. Competitors must listen on VHF as per S.I.4.1. or check with the Starting Officer before the first warning signal.

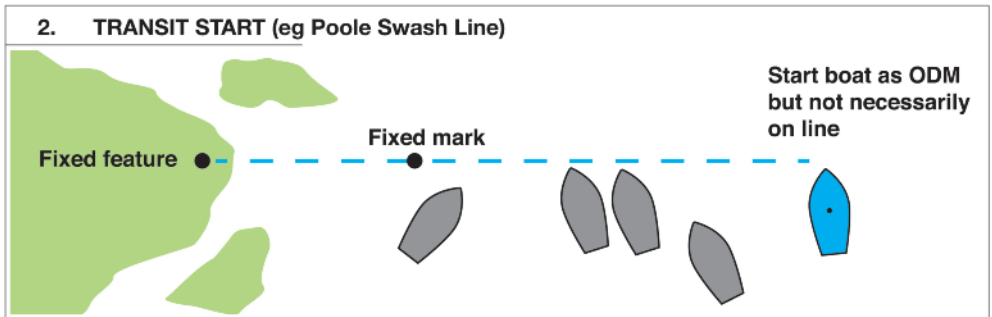
## PYRA Alternative race starts

In each case, the ideal start line length should equate to  $1.5 \times$  total competing boat lengths.  
For ease of calculation, assume 10m typical boat length; therefore for 10 competitors, start line =  $10 \times 15\text{m} = 150\text{m}$ .

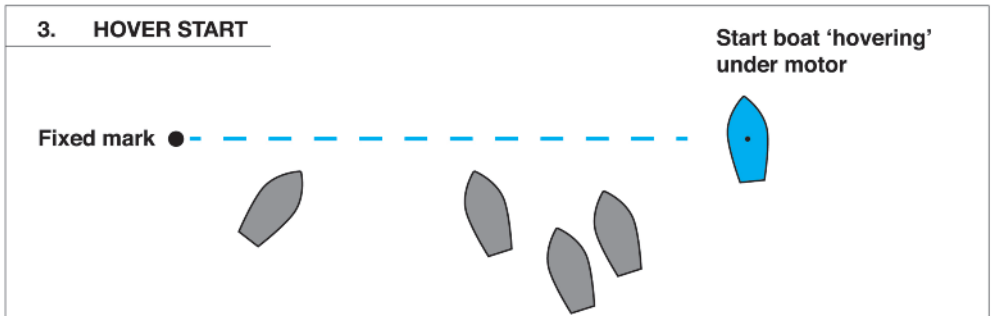
### 1. FIXED MARKS



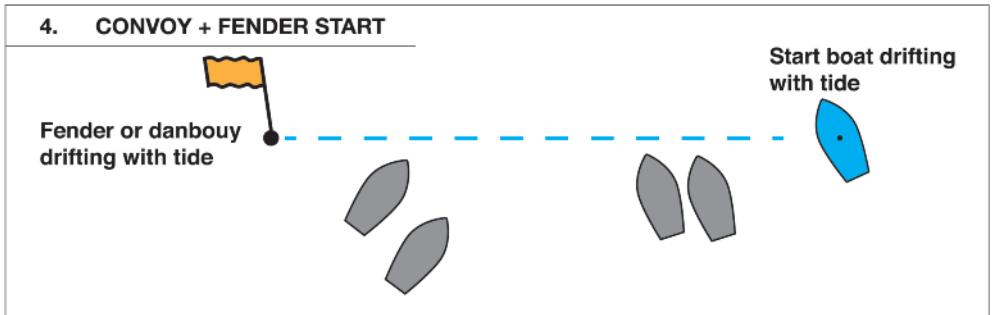
### 2. TRANSIT START (eg Poole Swash Line)



### 3. HOVER START



### 4. CONVOY + FENDER START





### 7.3.4 Poole Starts

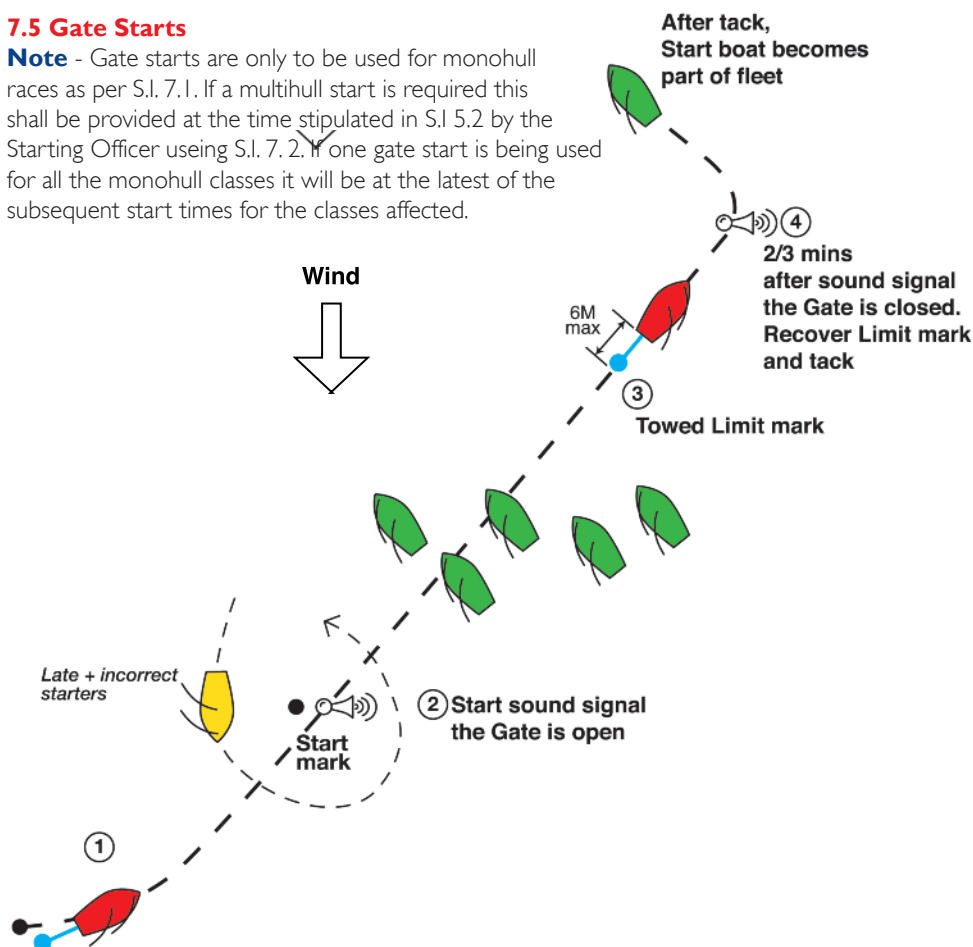
If the forecasted weather conditions dictate a race may be postponed to the following day. The postponement will be notified by e-mail by midday on the day before the scheduled race and also by VHF as per S.I.4.1 on the day of the race. The proposed start time of the postponed race will be announced with the notification of the postponement. Instructions regarding the postponed race may be varied from the original race by the Race Committee. If instructions regarding the postponed race change the published destination of the race no points from the race will count towards any race series.

### 7.4 Recalls

Recalls may be notified on VHF as per S.I.4.1. The start of a class, which has been signaled for a General Recall, will be postponed until after all other classes have started. This amends RRS 26 and 29.2 and the meaning of 1st. Substitute.

### 7.5 Gate Starts

**Note** - Gate starts are only to be used for monohull races as per S.I. 7.1. If a multihull start is required this shall be provided at the time stipulated in S.I 5.2 by the Starting Officer using S.I. 7. 2. If one gate start is being used for all the monohull classes it will be at the latest of the subsequent start times for the classes affected.



Illustrations by di@the-designworks.co.uk

### A) Starting Area

This will be in the vicinity of the Start Mark. The identity of the Pathfinder and Start Mark will be announced to competitors in accordance with S.I.4.1

### B) Starting Signals

These will be made by the Starting Officer. Sound Signals only will be made; there will be no visual signals. This amends RRS 26.

### C) Pathfinder

The pathfinder may fly a PYRA Battle Flag from her backstay or similar position, from the Warning Signal until the closure of the gate, or such later time at her convenience.

### D) Positioning of Pathfinder

Approximately 30 seconds before the starting signal, the pathfinder will commence a close-hauled port tack from the vicinity of the Start Mark. She may tow a limit mark behind her; no more than 6m astern of her.

### E) Starting Line

The starting line for all boats, except the Pathfinder and those boats starting in accordance with S.I.7.5.8 is between the Start Mark and the Pathfinder. If the Pathfinder has elected to tow a limit mark the start line is between the Start Mark and the limit mark towed by the Pathfinder. All starting boats shall cross the start line on starboard tack.

### F) Length of Starting Line

The Pathfinder will maintain her course for the length of time communicated in accordance with S.I.4.1, which shall be either 2 minutes or 3 minutes. At the sole discretion of the Pathfinder, the Pathfinder may close the line before the stated time if she is satisfied that all competitors in the vicinity of the start have started correctly by the time she closes the line. The Pathfinder does not have discretion to lengthen the line beyond the stated time.

### G) Closing the Line

After the required time the Pathfinder will make a sound signal, retrieve the limit mark, and tack. Once she has completed this tack she is deemed to have started. Any other competitor who is on the pre-start side of a line between the stern of the Pathfinder as she completes her tack, and the Start Mark, must start in accordance with S.I.7.5.H.

**Note:** If another class is to start following the current class, the Pathfinder may release the limit mark to free float instead of retrieving it.

### H) Incorrect and Late Starters

Any boat, not having correctly started, which passes on the port side of the Pathfinder whilst the gate is being opened, or which is a late starter for any reason, shall start by rounding the Start Mark to port, such rounding to include a gybe. This rounding of the Start Mark shall be after, and in addition to, any penalty taken in accordance with S.I.7.7 Use of Engine at Start.

### I) Interference with Pathfinder and/or limit mark

After the Preparatory Signal a boat shall not interfere with the unobstructed sailing of the pathfinder, or with the limit mark towed astern of her. Any boat that so interferes, or causes any other boat to interfere, shall retire from that race and any subsequent restarts of that race. Any boat so failing to retire shall be reported to the Race Committee by the pathfinder and will be disqualified. Any such disqualification shall not be used as a boat's discard in that series. This amends RRS 63.1

## **J) Ranking as Marks**

The Start Mark, the Pathfinder and the limit mark towed astern of her all rank as starting marks until the Pathfinder completes her tack on closing the gate.

## **K) Touching a Mark**

When a boat cannot otherwise avoid touching a starting mark she may hail a right of way boat for room, and shall thereafter retire or protest as necessary.

## **L) General Recall**

In the event of a significant error in the starting procedure of a gate start, or for any other reason, the Starting Officer may signal a general recall at any time before the closure of the Start Line.

## **7.6 Keeping clear of the Starting Lines**

After the Warning Signal of a class, all other classes shall keep clear of the Starting Line.

## **7.7. Use of Engine at Start**

A Boat, in order to arrive in the vicinity of the Starting Line after the Preparatory Signal, may use her engine or be towed into the vicinity of the Starting Line in order to rank as a starter. A boat availing herself of this privilege shall, before crossing the Starting Line, cease to use her engine or drop her tow and shall turn through not less than 360 degrees, keeping clear of all competing boats which are starting, or have started correctly, before regaining her right of way. A boat, which takes advantage of this privilege, shall report the circumstances with a Declaration to the Finishing Officer, Class Captain or Hon. Records Secretary immediately after the race. The Race Committee shall decide whether she is to be regarded as a bona fide starter. (This rule is for the benefit of Competitors who otherwise, genuinely, would not have been able to be at the Starting Line in time. It is not intended to be used to assist in manoeuvring at the start after the Preparatory Signal. Any boat so doing shall be subject to disqualification).

## **7.8. Adverse Conditions**

- A)** The Race Committee will endeavour to start all races as shown in the programme.  
Notwithstanding this instruction, the rights of the Race Committee under the RRS to abandon, cancel and re-sail races are not affected.
- B)** For all classes: at the discretion of the Race Committee, the start may be delayed and the course and destination of any race may be changed. Listen on VHF as per S.I.4.1. for details of revised course. In this event Code Flag 'C' may be flown either from the Starting Boat or Starting Station as appropriate. This amends the RRS meaning of Code Flag 'C'. If the advertised race was a Cross Channel Race its replacement, unless a Cross Channel Race, shall not count for points.
- C)** For all classes: at the discretion of the Race Committee the return race from an 'away destination' may be brought forward to take advantage of a weather window before impending adverse conditions. Every effort shall first be made to inform all known entrants by VHF as per S.I.4.1 and by mobile phone where contact numbers have been supplied.

## 8.0 Additional Rules Whilst Racing

### 8.1. Use of engine During a Race

**A)** Attention is drawn to “INTERNATIONAL REGULATIONS FOR PREVENTING COLLISIONS AT SEA”, rule 9(b), which states *“A vessel of less than 20 metres in length or a sailing vessel shall not impede the passage of a vessel which can safely navigate only within a narrow channel or fairway”*. Examples of narrow channels and fairways are the buoyed channels in the Solent between the Needles Fairway and the Nab Tower; the Swash Channel, the entrance to Poole Harbour; the buoyed channels within Poole Harbour and the entrances to Portland and Cherbourg. In order to avoid impeding commercial shipping that is under way in a narrow channel or fairway, a boat may use her engine, or any other means of propulsion, without retiring. This modifies RRS 42 as permitted under RRS 42.3h.

**B)** If the engine is used under 8.1a or during a race to recover crew or to render assistance or to avoid danger; details of the incident shall be reported to the Class Captain at the earliest opportunity and to the Hon. Records Secretary when reporting results. When a Committee Boat is employed; the incident shall be reported to the Committee Boat when finishing.

### 8.2. Automatic Steering

The use of automatic or mechanical steering devices is permitted.

### 8.3. Adjustable Keels

A boat with an adjustable keel must race with it fully extended. Adjustment during a race is not permitted.

### 8.4 Alternative Penalties

**A)** For Passage and Channel Races the Scoring Penalty RRS 44.3 shall apply. The number of places for calculating the penalty shall be 1.

**B)** For all other races one - turn and two - turn penalties, RRS 44.2 will apply.

### 8.5. Shortened Course

**A)** All Classes: RRS 32 will apply when a committee boat is in attendance and monitoring the finish.

**B)** The course may be shortened during the race at a predetermined waypoint by the race committee or the class captain. In the absence of the class captain, a representative elected before the warning signal for that class may shorten the course. This changes RRS Rule 32.

**C)** Shortened course information shall be announced via VHF on the channel used during the race start. No sound signals will be made, and no flags will be displayed. This changes RRS Rule 32.

**D)** In the event that the course is not shortened and intermediate timing marks have been included in the course, positions shall be awarded in “flights”.

For example, 3 Boats reaching the furthest intermediate waypoint shall have their corrected times calculated, and then be awarded positions 1-3, the next waypoint back, places 4-6 and so on. Boats failing to reach any intermediate waypoint shall be scored DNF. This changes RRS Appendix A A3.

**E)** In the event that sailing instruction c) applies, competitors need only declare the time for the furthest waypoint they reached, but must state clearly in their declaration which waypoint they got to.

## 9.0 Finishing

### The Poole Finish

No matter from which direction you come you must go between Bar Buoy (No.1) and No.2.  
See illustration

Finish leaving Swash Channel  
Buoy No 4 to starboard with  
the finish line defined by a transit  
of buoys Nos 3 and 4

**NOTE:**  
Informative, written SI  
takes precedence

#### 9.1. Finish Lines

**Alderney Finish Line:** From inside Braye Harbour finish line formed when the end of the Admiralty Breakwater bears 300 deg.(M) by hand bearing compass.

**Bay Finish Line:** A committee boat line within Poole Bay as per section S.I.4.1.

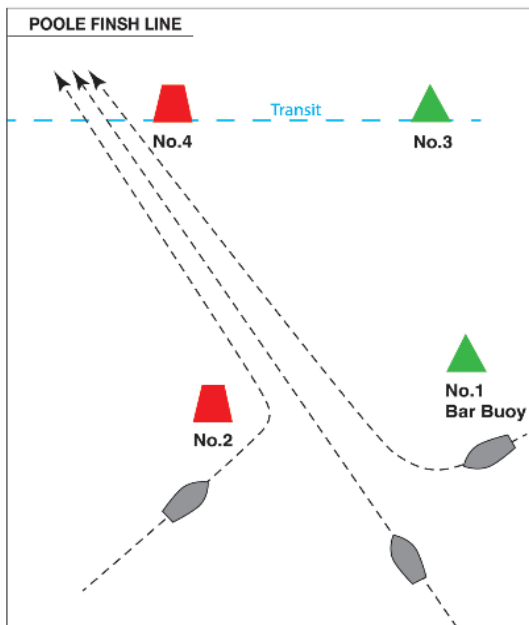
**Beaulieu Finish Line:** Pass south of SRM 3G (Kilburn & Strode Patents & TMs – was Sevenstar Yacht Transport). Finish line formed by bringing SRM 3G into transit with Beaulieu Spit Dolphin (timber tripod) (FR.5s). ODM is East Lepe Buoy.

**Bembridge Finish Line:** Pass east of the former tide gauge (FL.Y.2s) (50,42.45N 01°05.02W). Finish line formed by bringing the former tide gauge into transit with White Seamark (50,42.09N 01,05.95W) on the shore.

**Cherbourg Finish Line:** When entering the Petit Rade the finish line is a transit along the seaward face of the Digue du Homet breakwater (Q.G.). The ODM is red PHM Buoy (Q.R.) to Port approx 2.5 cables.

**Committee Boat Finish line:** A line between the main mast of the Finishing/ Committee Boat and an ODM. The boat may be identified by a PYRA Flag, and shall broadcast its location together with a description and location of the ODM to competitors on VHF as per S.I.4.1, if either differs from the start. The ODM may be laid specifically for the purpose, but can be any suitable mark or buoy used for racing or navigation

**Dartmouth Finish Line:** Pass between Homestone PHM (Q.R) and Castle Ledge SHM (FL.G.5s) with the finish line formed by bringing into transit West Rock South Cardinal and Mew Stone South Cardinal, to the east.





**Gosport Finish Line:** Pass north of SRM 5E (Stokes Bay East - was Darling Associates Architects) yellow race mark and take time when SRM5E bears 180 deg.(M) by hand bearing compass.

**Guernsey Finish Line:** Pass to the east of Reffee South Cardinal (49, 27.81N 02, 31.18W). Take time when Reffee bears 270 deg.(M) by hand bearing compass. ODM Alligande Beacon (Fl(3)G.5s).

**Hamble Finish Line:** Pass to the east of Hook SHM (Q.G.(I) 15s) and take time when Hook SHM bears 270 deg.(M) by hand bearing compass. ODM is SRM 4B (Coronation) yellow race mark (Fl.Y.5s).

**Hurst Finish Line:** Pass north of NE Shingles East Cardinal Buoy(Q(3)10s). Finish line formed by bringing into transit NE Shingles Buoy with SRM 1M (Warden) SHM Buoy (Fl.G 2.5s). ODM being Hurst Point.

**Lymington-1 Finish Line:** (From the west) Pass south of SRM 2B (Dunford). Finish is a transit of SRM 2B and Pennington Outfall beacon. The ODM is Lymington Bank PHM.

**Lymington-2 Finish Line:** (From the east) Pass north of SRM 2F (Berthon). Finish when SRM 2F (Berthon) bears 160 magnetic. ODM is race mark approx. 0.5 nautical miles NNW of SRM 2F.

**Medina Finish Line:** Pass South of Gurnard North Cardinal Buoy. Finish when Gurnard North Cardinal Buoy bears 000 deg.(M).

**Poole Finish Line:** All yachts shall pass between Bar Buoy No.1 and No.2 and leave No. 4 to starboard. Finish line formed by transit of no. 4 and No.3 buoys.

**<< SEE ILLUSTRATION OVER <<**

**Portland Finish Line:** While passing through the Northern Ship Channel into Portland Harbour the finish line is a transit along the seaward face of the North Eastern Breakwater which is on your port side. The ODM is the Northern Arm (Oc.G.10s).

**Pursuit Race Finish Line:** A moving line that will be established at Finish Time in the vicinity of the leading boat.

**Southampton Finish Line:** Pass west of Test PHM (50 52.59N 01 23.45W) . Finish line will be a transit when Test PHM is in transit with SHM 7D (Weston Shelf) approx sighting 045 deg.(M). ODM is the post on Hythe Pier.

**St Vaast Finish Line:** Pass to the East of Le Gavendest South Cardinal Buoy. The finish line is when Le Gavendest is in transit with La Dent South Cardinal Buoy. The Line, approximately 5 cables long, is limited at Longitude 01.13.00W.

**Swanage Bay Finish Line:** A Committee Boat line in a position approximately 6 cables NE of Swanage Pier, using a suitable mark or buoy as the ODM.

**Torquay Finish Line:** Pass to the West of SHM (QG) 0.8 cables from Haldon Pier beacon. The finish line is when the SHM is in transit with Haldon Pier beacon (QG) on the end of Haldon Pier. Finish line is limited by the shoreline to the west.

**FINISH LINES CONTINUED >>>>>**

**Weymouth Finish Line:** While passing through the Northern Ship Channel into Portland Harbour the finish line is a transit along the seaward face of the North Eastern Breakwater which is on your port side. The ODM is the Northern Arm (Oc.G.10s).

**Yarmouth-1 Finish Line:** (From the west) Leave Sconce North Cardinal Buoy (50 42.53N. 01 31.43W) to Port and finish on a line formed by bringing into transit the Church Tower flag pole and Black Rock SHM (Fl.G.5s) (50, 42.57N. 01, 30.59W).

**Yarmouth-2 Finish Line:** (From the east) Pass south of SRM22 Charles Stanley and take time when SRM 22 bears due north by hand bearing compass. ODM is the Historic Wreck Buoy.

### **9.2. Time Limit: RRS 35 shall not apply.**

If the leading boat finishes within the last 1/2 hour before the stated time limit then the time limit shall be 1/2 hour from that finish time. For Cross Channel races the time extension shall be 3 hours. Boats not finishing within the time stated limit or its extension will receive retirement points. In the event of a delayed start, the time limit will be extended by the length of that delay.

### **9.3. Finishing Times and Self Timing**

- A)** All competitors shall record their finishing times in all races in hours, minutes and seconds using BST.
- B)** All competitors are required, when circumstances permit, to identify and time the finish of the boat immediately ahead and astern as accurately as possible.
- C)** All competitors are required to give their times to the Records Secretary as soon as possible.

#### **Two methods of submitting results are preferred over any others:-**

- 1)** Via the PYRA Web Site Submit PYRA Race Result page:  
<http://www.pyra.org.uk/sailing/submit-race-results/>  
For races finishing away from Poole, finishing times should be handed to the Class Captain as soon as possible
- 2)** Via e-mail to [results@pyra.org.uk](mailto:results@pyra.org.uk)  
The e-mail should include:  
The Race(s) competed in,  
The Name, Class and Sail Number of the boat,  
The Finish Time in BST Hrs/Min/Sec,  
Where possible the name or sail number of the boat ahead and astern.  
**If racing in Class 4 and more than three persons were on board during the race you must include the number on board with the submission.**

**D)** The time limit for handing in results is 18.00 on the day following the race. For a group of races such as Poole-Alderney-Poole it is the last race of the group. There shall be no exception. Failure to comply shall result in a boat being deemed to have retired.

### **9.4. Retirements**

- A)** A boat, which has retired, shall strike her class flag and fly the appropriate ensign. She must keep clear of competitors who are still racing and advise the Records Secretary as per SI 9.3 having advised the Class Captain or Starting/Race Officer when appropriate, as soon as possible.

- B)** Failure to notify retirement, especially on Cross Channel or night races may result in the unnecessary deployment of search and rescue services. Competitors are therefore strongly recommended to enrol on the RYA SafeTrx system with a nominated Shore Contact who may alert HMCG in the event of non-arrival.

### 9.5. Race Results

A provisional result may be calculated and announced as soon as possible after the last boat has finished. Official results with corrected times shall be calculated by the Committee and a copy shall be displayed on the PYRA Website.

## 10.0. Protests

### 10.1. Protest Committee

The Protest Committee shall be appointed by the supporting club or in default by the General Committee.

### 10.2. Protests

Protests shall be delivered to the Hon. Secretary of PYRA within 48 hours of the finishing time of the protesting boat. If the race is one of a group then within 48 hrs of the finishing time of the protesting boat in the last race of that group.

In the case of a Regatta, protest forms are to be delivered to the Regatta Organisers in accordance with the Regatta Sailing Instructions.

## 11.0 Scoring System

### 11.1 Sailover

In the event of only one boat starting, providing she sails the course and finishes correctly, she shall be awarded the trophy and points for that race.

### 11.2 Races to count

The number of races to count shall be as detailed in SI 5.2.

## PYRA Challenge Trophies

### CLASS 1

**Poole to Poole Series** Cobham Cup

**Passage Series A** Chrissy Trophy

**Passage Series B** Breakaway Cup

**Cross Channel** Bert Lockyer Memorial Trophy

**Overall Points: higher rated boats**

Wilson Walton Trophy

**Overall Points: lower rated boats**

Tigo Trophy

Rating split to be advised once the class list is established.

### CLASS 2

**Poole to Poole Series** Anvil Trophy

**Passage Series A** Fore Bitters Trophy

**Passage Series B** Leap Cup

**Cross Channel** Lyn Powell Memorial Trophy

**Overall Points: higher rated boats**

David Sadler Bowl

**Overall Points: lower rated boats**

Waarschip Trophy

Rating split to be advised once the class list is established.

### CLASS 3

**Poole to Poole Series** Marguerite Cup

**Passage Series A** Chasse Maree Cup

**Passage Series B**

Class 3 Goblet Passage Series B

**Cross Channel** Max Marine Challenge Bowl

**Overall Points** Class 3 Goblet Overall Points

### CLASS 4

**Poole-to-Poole Series**

Poole Yachting Week Trophy

**Passage series A**

Portman Building Society

**Passage Series B** B Class Saturday Points

**Cross Channel** Poole Yachting Week Tankard

**Regatta Series** Wadworth Trophy

**Overall Points** Coventry Cup

### CLASS 5 MULTIHULLS

**Season Overall Points** Harry Evans Cup

### ALL CLASSES

**Pursuit Race Trophy** Morning Brig

**Most contribution to PYRA**

Rosemary Marsden Trophy

**Best Newcomer** Walters Cup

**Tenacious Award:** Boat without a trophy competing in most races Jack Goodricke Plate

**Leading Yacht in the ISC Round The Island Race completing as an ISC rated boat, also completing in the PYRA Poole-Cowes Race.**

Aimee Trophy

**Best points all Passage and Channel Series** Yachting Monthly Trophy

**Boat with age allowance** Taffrail Bowl

**OTHER TROPHY** (which will be presented with the Parkstone YC trophies)

**Leading Parkstone Yacht in the ISC Round The Island Race completing as an IRC rated boat, which also competed in the PYRA Poole-Cowes Race** Regent Cup

### How to ensure that you get a result recorded

Results should be submitted either:-

Via the PYRA Web Site - Results Submit PYRA Race Results Page -

<http://www.pyra.org.uk/sailing/submit-race-results/>

Or e-mailed to: [results@pyra.org.uk](mailto:results@pyra.org.uk)

Subject should contain:-

- **Race number(s) – Boat**

Your e-mail text should include:-

- **The race(s) you have competed in**
- **The name, class and sail number of your boat**
- **Your finish time(s) in BST Hrs/Min/Sec**
- **Where possible the name or sail number of the boat(s) ahead and astern**

If you raced in Classes 4 and more than three persons were on board over the age of seven years during the race the number on board is to be reported with the finishing time. (Crew will be counted as eight years old, or older, if they attained the age of 8 before the 1st September of the preceding year (as per school year)).

The time limit for notification to the records secretary is 18.00 on the day following the race or group of races, so for a weekend away, eg Friday to Sunday the latest time to get your result in is 18.00 on the Monday.

### SelfTiming - BST/GPS

**All times in the Red Book are BST, BST is UTC+1 hour.**

- Radio time signals can be used to synchronise watches, but not from a DAB radio as the signals from these are delayed.
- Watches could be synchronised to the Anthorn radio clock signal or to any other source accurate to the nearest second, eg [www.time.is](http://www.time.is). see also [www.pyra.org.uk](http://www.pyra.org.uk)
- GPS time is not UTC. Most modern GPS units apply a correction to GPS time to display UTC, usually with an additional time zone correction. However the UTC correction is sent periodically as part of the GPS signal so if you use the time displayed on a GPS ensure that it has "caught up" with UTC, which may take several minutes.
- Radio controlled clocks and watches can jump when a correction is applied, indicating that they are not always "spot on".
- It is the competitor's responsibility to report the boat's finish time accurately in BST to the nearest second.



## Acting as start boat

### If you volunteer or are requested to act as Start Boat, as a minimum you will need:-

- Red Book
- PYRA flag
- Horn or Whistle
- Start list
- Pen/pencil
- VHF tuned to Ch M2  
(ideally cockpit operated or handheld),
- Watch/timepiece (see Red Book notes above regarding Self Timing - BST/GPS)

Consider well in advance (in discussion with Class Captains) preferred courses and how the start is to be organised bearing in mind available marks, tide and wind conditions. There are a number of start options available to you as described in - Red Book, Part Two Sailing Instructions, 7.3.1 The Starting System. Class captains may request course changes up to 30 mins before the first start. Once on station, decisions must rest with the Starting Officer, i.e. you.

With decisions to be made and competitor radio traffic, it can get hectic in the lead up to the start so leave the dock in good time to be on station ideally 30 mins, not later than 20 mins (and certainly minimum 15 mins). Before the first Start use flag signals but if this is not practical/possible do the following.

### Fly the PYRA Flag and ensure sound signal can be heard via VHF

- 1 30 mins before 1st Start – Request radio check from any PYRA vessel.
- 2 Following confirmation advise fleet e.g. *"All PYRA vessels, all PYRA vessels - This is your Committee Boat ..... (repeat boat name). We are on station at/en route to ..... It is our intention to start the ... (sponsors name)....race to..... with the 1st start at.....hrs in accordance with the Red Book. (If late advise that Flag AP is flying). We will repeat this message in approximately 10 minutes. In the meantime, if there are any line entries please advise as soon as possible. This is ..... listening on channel M2"*
- 3 If line entries are requested, note Name, Sail Number and Class and the number of persons on board (POB).
- 4 20 mins before 1st Start – Repeat *"All PYRA vessels, all PYRA vessels - This is your Committee Boat ..... (repeat boat name). We are on station at/en route to ..... It is our intention to start the (sponsors name)....race to..... with the 1st start at.....hrs in accordance with the Red Book. (If late advise that Flag AP is 'flying'). We will transmit a time check in approximately 5 mins at.....hrs. In the meantime, if there are any line entries please advise now. Line entries will not be accepted after the 1st Warning Signal. This is ..... listening on channel M2"*
- 5 16 mins before 1st Start – Time check warning - *"All PYRA vessels, all PYRA vessels - This is your Committee Boat ..... (repeat boat name). A time check for .....hrs will follow in approximately .....seconds — pause — 15 seconds, 10 – 5-4-3-2-Mark. That was your time check for .....hrs. The Start Line is ... (describe Line and repeat clearly). The course for class.../all classes (as appropriate) will be ..... (Please take your times at ..... intermediate marks if appropriate). For away destinations confirm the RV arrangements and Sponsor name. Also request that Finish Times are handed to class captains for provisional results. Conclude "This is ..... listening on channel M2"*
- 6 10 mins before 1st Start - *"All PYRA vessels, all PYRA vessels - This is your Committee Boat ..... The course for class.../all classes (as appropriate) will be ..... (Please take your times at ..... intermediate marks if appropriate). The first warning signal for class 5 will be at.....hrs. (Clarify that you will run through the start sequence for each class even if there are no competitors in a particular class). This is ..... on channel M2"*

- 7** 6 mins before 1st Start if AP has been 'flying' - 2 x sound signals and transmit - *"That was the signal for AP Down"*
- 8** 5 mins before 1st Start – 1 x sound signal and transmit - *"That was the Warning Signal for Class 5."*
- 9** 4 mins before 1st Start – 1 x long sound signal and transmit - *"That was the Preparatory Signal for Class 5."*  
*Repeat the course for class 5 if your situation permits – "The course for Class 5 is ..... (Please take your times at .....intermediate marks if appropriate)".*
- 10** 1 min before 1st Start – 1 x sound signal and transmit - *"That was the 1 minute Signal for Class 5."*
- 11** 1st Start/5 mins before 2nd Start – 1 x sound signal (If any boat is OCS a 2nd sound signal is required. If too many boats are OCS to allow identification, a 3rd sound signal is required promptly to notify a General Recall.
- 12** 4 mins before 2nd Start - 1 x long sound signal and transmit - *"That was the Preparatory Signal for Classes 3 + 4."* etc etc etc (Repeat the course for the class if your situation permits – *"The course for class ....is ..... (Please take your times at .....intermediate marks if appropriate)".*
- 13** As soon as possible following last start and clearance of line by any restarting OCS boats, hoist sails, stop motor and cross the start line noting your own Start Time.
- 14** Following race confirm number and names of competing boats with each class start time to the Results Officer: Remember to advise your own 'late start time'.

## Social Arrangements

### PRIZE GIVINGS

Poole YC & PYRA Prize Giving	Saturday 30th October 2021	The Poole Yacht Club
<i>Table Bookings 01202 666668</i>		

Parkstone YC & PYRA Prize Giving	Saturday 6th November 2021	Parkstone Yacht Club
<i>Table Bookings 01202 738436</i>		

Royal Motor & PYRA Prize Giving	TBA	Royal Motor Yacht Club
<i>Table Bookings 01202 707227</i>		

<b>PYRA AGM</b>	19th January 2022	TBA
-----------------	-------------------	-----

## The Candlelight Dinner & Dance

TBA



*The sail in front*